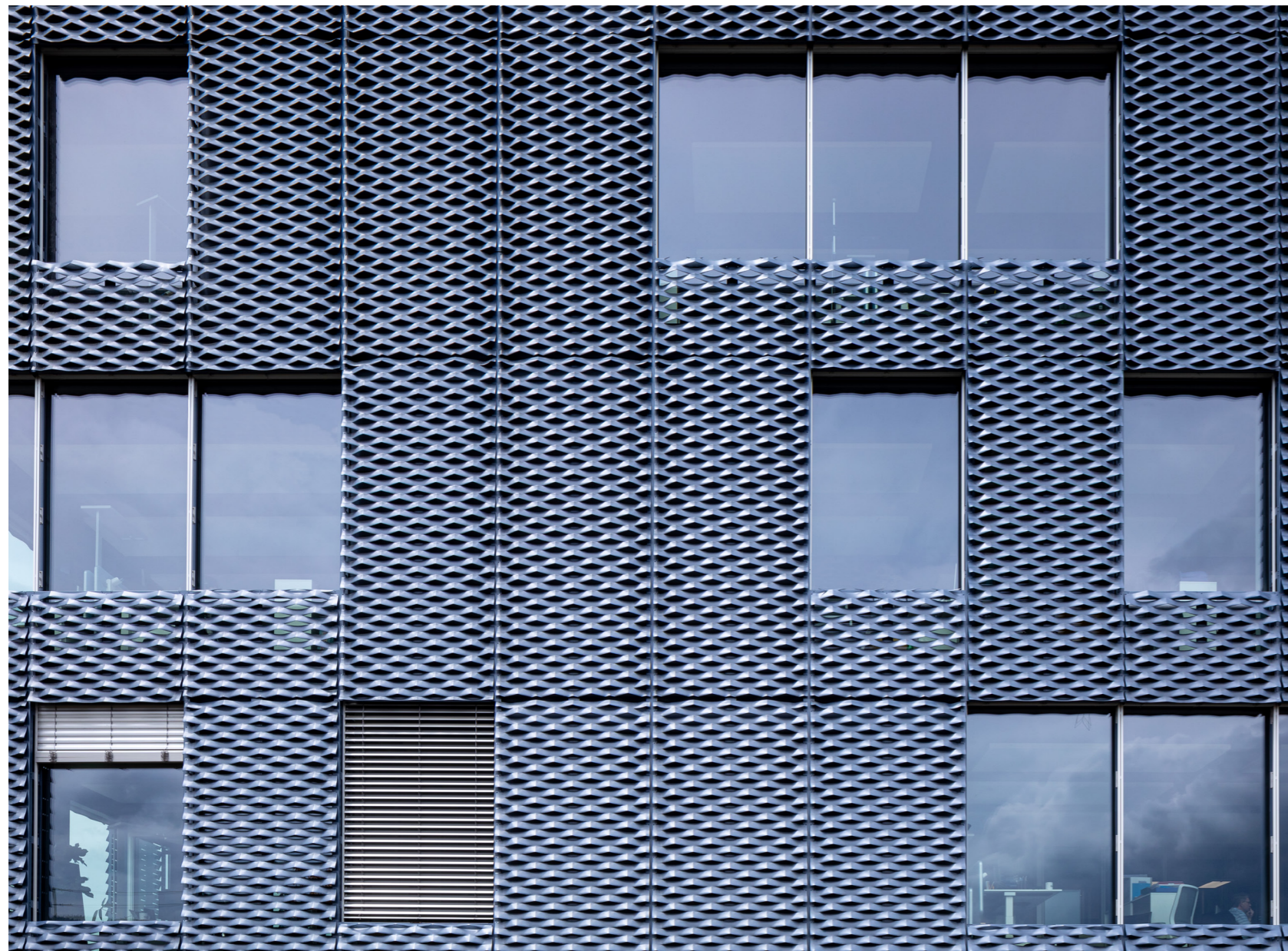


A facade with a play of light

Every aspect of the new technology centre constructed for Stöcklin Logistik AG in the Swiss town of Laufen is impressive. The architecture of the building conveys a sense of robustness and functionality, combined with an attractive design. The expanded metal panels that make up the facade have been coated in a unique colour formulated specially by KARL BUBENHOFER AG.



KARL BUBENHOFER AG



Stöcklin Logistik AG is a leading player in the international intralogistics sector. The specialist Swiss company offers all the solutions needed for modern logistics systems, from high-bay warehouses and warehouse management software to industrial trucks. Following a period of growth, the company decided to build new manufacturing and office buildings in Laufen to house around 340 employees, together with a high-bay warehouse for pallets and containers, all of which covered an area of around 35,000 square metres.

The new technology centre is intended to meet all the company's current requirements and to bring about a change in its culture. "Short distances, direct communication, the very latest technology, efficient logistics, our own staff canteen with a roof terrace, a pleasant environment and a good atmosphere will all help to create a sense of community and well-being among our employees that will enable them to work together to overcome future challenges," explained Urs Grütter, chairman and CEO of Stöcklin AG, when the construction work started.

The architecture underlines the purpose of the building

Marco Bischof from the architecture and logistics company W+P Weber und Partner AG, based in the town of Wil in Switzerland, was responsible for the overall architectural concept of the technology centre. Weber und Partner acted as the general contractor and planned and implemented the entire structure together with the client. Industrial buildings must most importantly be functional and robust. "When we are designing buildings for industrial use, the focus is often on cost-effectiveness. For Stöcklin, we were able to opt for a more individual facade design using expanded metal with a coating in a colour specially formulated for the company. This creates the right identity for the headquarters of this well-known international firm," explained Marco Bischof. The authentic design and harmonious combination of materials and colours ensure that the building makes a striking impact. The architecture, which reflects the history and philosophy of the company, also reinforces the corporate image.



The specially developed colour gives the facade of the new building a powerful, elegant appearance, without seeming obtrusive.

The powder coating plays with light and shade

Interior designers are always aiming for perfection. “It starts with the material and colour of the floor covering and finishes with the right lighting for the rooms,” said Marco Bischof. Coordinating the colours and materials is ultimately the key to the success of a project. Marco Bischof and his team tried to meet all the client’s requirements using standard shades, but when it came to the colour of the facade, they ran out of options. They had been looking for a coating for the metal facade components that would reinforce the architectural design and provide excellent weather resistance, a high-quality surface finish, an impressive appearance and a unique colour. The standard RAL shades met the technical requirements, but were too blue, too obtrusive, too flat or simply too “ordinary”.

At around this time, Mario Füglistaler from KARL BUBENHOFER AG, the powder coating manufacturer from Gossau in Switzerland, made contact with Marco Bischof purely by chance, which proved to be a lucky coincidence. “After I’d received a suitable sample from a metal supplier, I discovered that the colour was no longer available. Then Mario Füglistaler assured me that his company could mix an even better shade for Stöcklin on the basis of the sample. I was very keen to see the result and I wasn’t disappointed,” explained Marco Bischof.



Specialising in customised powder coatings

“At our family business, we have proved on many occasions that we can reproduce customers’ special requirements to a high level of accuracy. Developing the colour for Stöcklin was just the sort of challenge that we relish,” said Mario Füglistaler.

During the course of the meetings that were held, Füglistaler gained an in-depth understanding of the architect’s requirements. On the basis of this information, the powder technology department of KARL BUBENHOFER AG developed and formulated a unique powder coating, which created a play of light and shade on the expanded metal facade components and reinforced the unique architectural design of the industrial building. The product is based on well-established Polyflex powder coatings which have demonstrated their effectiveness for a wide range of external applications. To identify the exact shade required, a number of test series were carried out in which small samples were coated first by hand and then automatically in the state-of-the-art laboratory at KABE. This made it possible to ensure right from the beginning that the parts would accurately reproduce the test results later in the production process. Applying the newly formulated powder to a full-sized metal sample allowed it to make its full impact. This convinced the client that KARL BUBENHOFER AG was the right partner for the project and that the right colour had been found.

The aim was to discover a shade that stood out from standard colours but was not too obtrusive. The “Stöcklin blue” newly created by KABE, which is known as PAC-140-SD SM 1290, meets these requirements exactly and, with its velvety deep-matt finish, it gives the building a light and elegant feel. Other advantages of the tried-and-tested Polyflex range include excellent gloss retention, consistent flow and a high standard of weather resistance. The coating solution supplied by KARL BUBENHOFER AG ultimately made such a good impression on the client that it was used for a range of other internal fittings, such as fire doors, window frames and banister rails.

A unique appearance for a unique building

Today the new technology centre of Stöcklin AG is resplendent in its own unique shade of colour. This ensures that the company’s headquarters catches the eye but is not obtrusive, while providing the shell of the building with long-term protection. The play of light and shade on the surface of the large, solid industrial building in its rural setting lends it a light and elegant appearance. This effect has been achieved as a result of the smart coating solution from the powder coating specialists at KARL BUBENHOFER AG.

Contact details

KARL BUBENHOFER AG, Tel. +41 71 387 43 73, pulver@kabe-farben.ch, 9201 Gossau
KABE Pulverlack Deutschland GmbH, Tel. +49 (0) 7255 99 161, info@kabe-pulverlack.de, D-76676 Graben-Neudorf
W+P Weber und Partner AG, Oberdorfstrasse 15, CH-8001 Zürich, Tel : +41 71 929 49 80, Mail: info@wpag.ch

Architect/Project manager

Marco Bischof: Tel: +41 71 929 49 81, Mobile: +41 76 393 47 24, Mail: bischof@wpag.ch

November 2020



The carefully planned colour scheme continues inside the building.



Perfect harmony between materials, forms and colours.