

WELCOME TO THE
WORLD OF
KABE FARBEN



POLYFLEX® DS Thin powder coatings



Powder coatings

kabe-farben.ch



KARL BUBENHOFER AG



THIN POWDER COATING – LESS IS MORE!

The demands on surface technology are continuously increasing and require individual solutions. Growing pressure from competitors calls for a strong willingness to innovate and to optimize production processes.

**We have the solution to these challenges!
Our technology makes it possible:**

Thin coatings that produce a closed film with excellent free-flowing properties. And all this can be achieved without investment or retraining. Optimized recipes and special production technologies enable us to supply DS thin powder coatings that provide a perfectly free-flowing coating film with optimum coverage with film thicknesses from 30 µm (depending on the colour) – for an efficient and resource-saving coating.

Same quantity of powder. Twice the surface.

+ 50% - 100%
area coverage

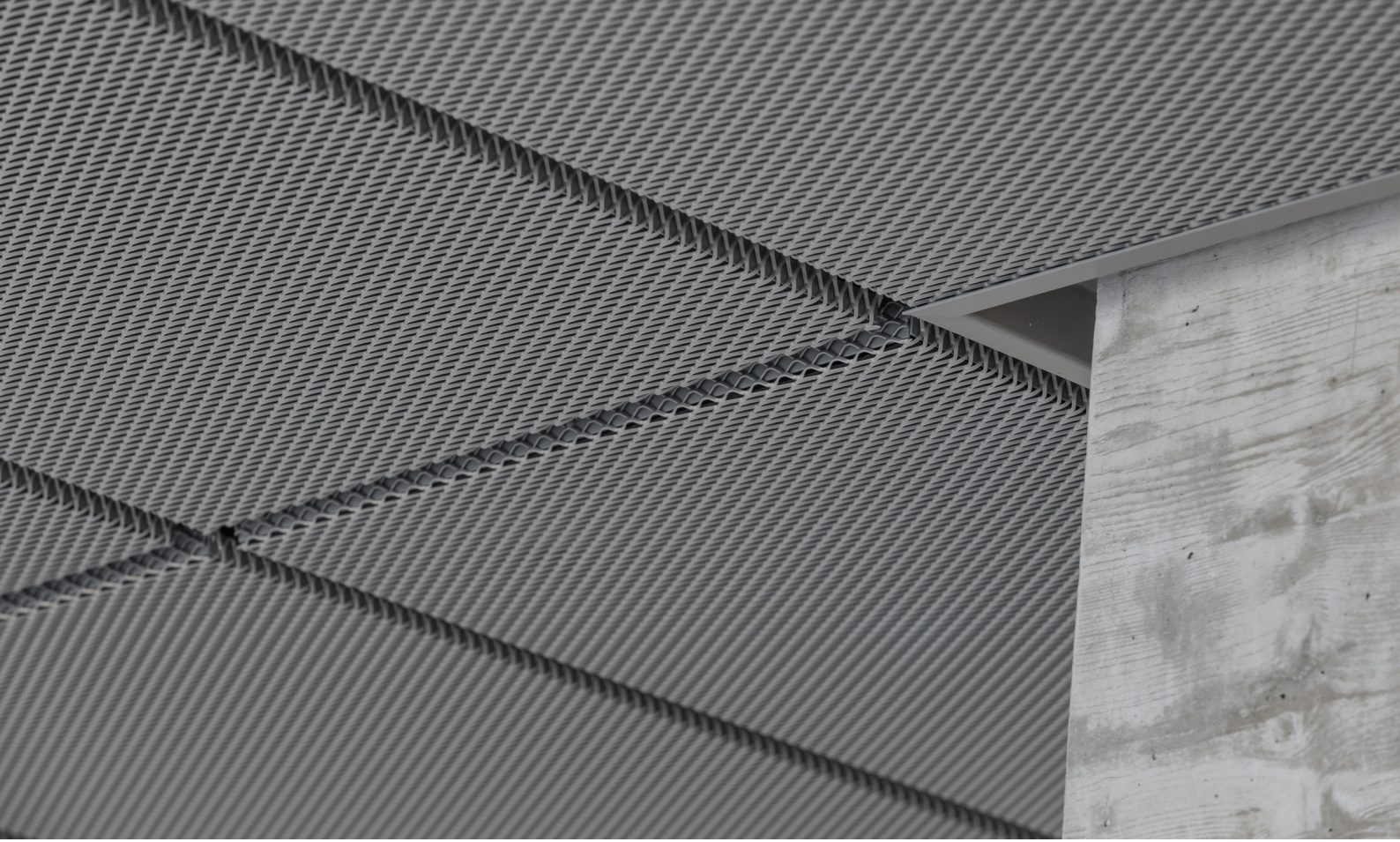


1 x Surface

Standard powder

1.5 - 2 x Surface

DS thin powder



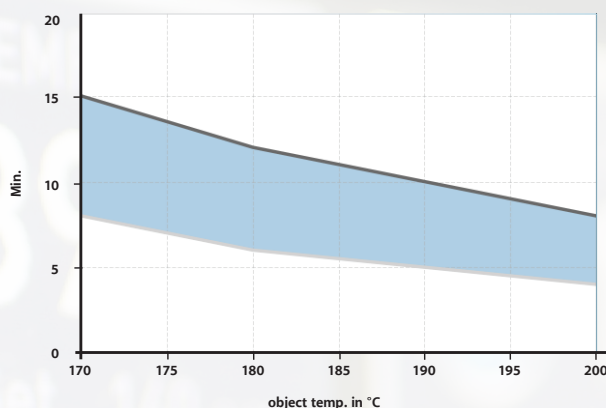
LOW-TEMPERATURE-THIN POWDER COATING (NT-DS) – SAVE ENERGY AND TIME

Low-temperature-thin powder coatings (NT-DS) from KARL BUBENHOFER AG give you benefits on all levels. You not only have a top-quality coating solution but can also increase your productivity or reduce energy costs.

Low-temperature (NT) powder coatings let you reduce your curing temperatures and therefore optimize your production process. Or you can increase your throughput by speeding up your conveyors.

A benefit in every respect!

Curing graph POLYFLEX® PES-55-NT-DS



Example articles:

- 14624
- 14124



Your benefits!

Cost savings

A film thickness of 30 µm and above (depending on the colour) result in cost savings in the double-figure percentage range.

Resource conservation

Thinner layers mean less material is needed and less energy and reworking are required – without compromising on coverage and surface quality.

Excellent flow characteristics

In all degrees of gloss and colour shades, the gradients can be compared to liquid paints.

No edge build-up

Irregularities in application have much less influence on the film thickness. Reduced edge build-up ensures that tight-fitting components can be assembled with high accuracy.

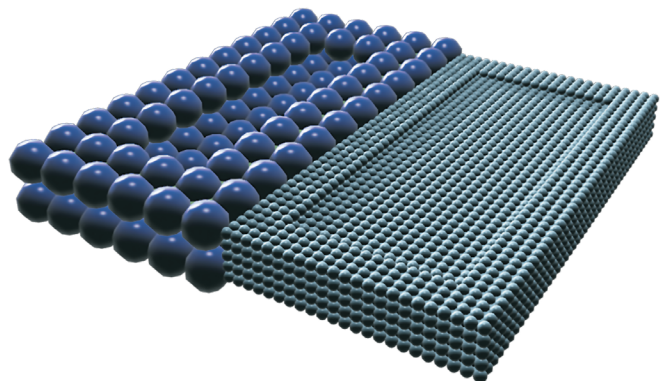
No investments

DS thin powder coatings can be applied using conventional plant and equipment.

No changes in application

Retraining requires time, effort and cost. This is not necessary, as DS is applied like a conventional powder coating.

REDUCED EDGE BUILD-UP





DS THIN POWDER COATINGS FOR MANY APPLICATIONS

DS thin powder coatings can be handled and applied just like a conventional powder. The existing equipment can be used without modification – from the transfer pumps to the spray guns and cyclone systems. Everything remains the same, except that powder can be saved while achieving excellent surfaces.

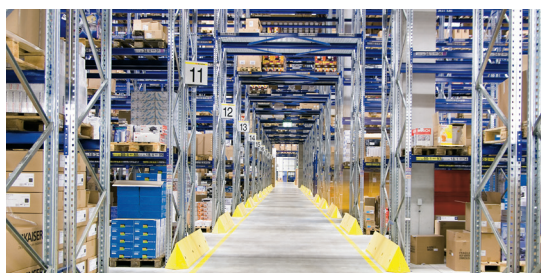
Our **list of DS references** provides information about reputable companies that are already enjoying the benefits of DS.



Design furniture



High-Tech



Sheet metal/metal processing



Outdoor equipment



A COATING SYSTEM FOR THE FUTURE

DS thin coatings are almost twice as efficient as comparable standard products on average. These savings in time and energy improve your company's cost-effectiveness. Low-temperature thin powder coatings (NT-DS) generate the lowest CO₂ emissions (foot print) of all industrial coatings.

For many years, KARL BUBENHOFER AG has been one of Europe's leading companies renowned for their environmentally friendly production process. Based on a keen awareness of our responsibility, we aim to achieve the maximum level of environmental compatibility for all our products in development, production and recycling.



Architecture Interior design



Shopfitting



Air conditioning technology



Automotive industry

POLYFLEX® Powder Coatings

Sampling options

A5 KABE Standard surface samples

A5 aluminium surface samples
(including product information)

- Delivered in a practical sample case, ideal for filing.
- The surface patterns are coated according to your specifications if required.



KABE powder coating sample

- We produce 1.5 kg of powder according to your requirements.
- Delivered in a 1.5 kg mini carton. (not valid for all items)



Request samples and technical information.



Powder coatings | Paints + plasters | Facade insulation | Industrial coatings

📍 **KARL BUBENHOFER AG** | Hirschenstrasse 26 | 9201 Gossau SG, Switzerland
T +41 71 387 41 41 | pulver@kabe-farben.ch | kabe-farben.ch

📍 **KABE Powder Coatings Sp. z o.o.** | ul. H. Sucharskiego | 77-100 Bytów, Poland
T +48 59 822 22 22 | info@kabe-powdercoatings.com | kabe-powdercoatings.com

📍 **KABE Pulverlack Deutschland GmbH** | Sofienstrasse 36 | 76670 Graben-Neudorf, Germany
T +49 7255 99 161 | info@kabe-pulverlack.de | kabe-pulverlack.de

A company of the **KABE Swiss Group** 

